



**DREAM DEVELOPERS®**



**+91 704 506 1800** | [www.dreamdevelopers.in](http://www.dreamdevelopers.in)

**Site Add.:** Vibgyor School Rd., Gandhar Nagar, Khadakpada, Kalyan, Maharashtra - 421 301.

**Corp. Off.:** 409, The Landmark, Plot No. 26 A, Sector 7, Kharghar, Navi Mumbai - 410 210.

Disclaimer: This plan, specifications, images, furniture layout and other details herein are only indicative and the developer reserves the right to change any or all of these in the interest of the development as per applicable rules & regulations. This contains artistic impressions and stock images for illustrative purpose and no warranty is expressly or impliedly given that the completed development will comply in any degree with such artist's impression as depicted. The information provided in this leaflet is intended solely for internal circulation and not for commercial use.



**DREAM DEVELOPERS®**



**DREAM  
ATLANTIS**

— EMPIRE OF LUXURIES —

VASANT VALLEY RD., KALYAN (W)

thoughttrains

Representational Image



CRAFTING A

# *Life*

THAT COMMANDS  
EXTRAORDINARY EXPERIENCES  
ETHEREAL LUXURIES AND  
EXQUISITE TRENDS

POWER, PROMINENCE AND PROSPERITY FIND THEIR PREFERRED DESTINATION AT DREAM ATLANTIS. THE MONUMENTAL LANDMARK IS POISED TO PUT KALYAN ON THE GLOBAL MAP CONFERRING A UNIQUELY DISTINCTIVE LIFESTYLE INSPIRED FROM THE LAVISH LIFE OF THE EMIRATIS. DREAM ATLANTIS IS AN EXEMPLAR OF LAVISHLY-DESIGNED RESIDENCES, KINGLY INDULGENCES AND A LIFE THAT IS AUTHENTICALLY EMIRATI AT HEART.

THE IMPOSINGLY MAJESTIC SKYRISE IS AN ADDRESS THAT BEFITS THE TASTE OF NEW-AGE MOGULS WITH ITS UNCONVENTIONAL PRIVILEGES. DREAM ATLANTIS IS POWER-STATEMENT THAT ONLY A SELECT FEW WILL BE PRIVILEGED TO FLAUNT AS THE EXTENSION OF THEIR PERSONALITY. **TO PUT SIMPLY, IT IS TIME FOR KALYAN TO WELCOME HOME.**

*#TheEmiratiLife*



PRESENTING

# EMIRATI *Life*

AT



DREAM  
**ATLANTIS**

— EMPIRE OF LUXURIES —

**PROJECT HALLMARKS:**

- 45-STOREY HIGH-RISE TOWER IN THE LOCALITY
- 2, 3 & 4 BHK RESIDENCES WITH SUNDECKS
- BIGGEST CARPET AREA & SUNDECKS IN KALYAN
- RESERVED PARKING FOR EACH FLAT
- GARDEN & SCHOOL WITHIN THE PROJECT
- 2 RECREATIONAL FLOORS ALONG WITH PODIUM GARDEN



A WARM WELCOME  
CRAFTED WITH

# *Elegance*

MAGNIFICENT ENTRANCE LOBBY





LAVISHLY DESIGNED TO  
ENHANCE THE ESSENCE  
OF

# *Expanse*

HOMES WITH BIGGER CARPET AREA

LUXURIOUSLY DESIGNED 2, 3 & 4 BHK  
RESIDENCES WITH SUNDECKS



IMPRESSIVE SUNDECKS  
THAT  
ELEVATE YOUR

# *Panorama*

LARGER BALCONY SPACE  
OPEN VIEWS



SPLENDID ABODES  
THAT  
CHERISH SPACE &  
*Sophistication*

SPACIOUS LIVING ROOM

Representational Images

PRIVACY FOCUSED BEDROOM

WELL-PLANNED KITCHEN

ELEGANT BATHROOM



ULTIMATE COMFORT  
WRAPPED IN TIMELESS

# *Opulence*

SPACIOUS BEDROOM





CURATED SUPERLATIVE  
EXPERIENCES OF

# *Extravagance*

IMMERSE YOURSELF IN 20+ INDULGENCES  
THAT BESTOW WELLNESS, RELAXATION,  
AND ENTERTAINMENT



THE EMIRATI WORLD  
INSPIRED BY  
YOUR HIGH-END  
*Aspirations*

**LEGEND**

1. Swimming Pool
2. Kids Pool
3. Basketball Court
4. Kids Play Area
5. Multi-Purpose Hall
6. Banquet Hall
7. Spa & Sauna
8. Crèche
9. Café Lounge with Juice Bar
10. Gazebo / Walkway
11. Indoor Games
12. Steam Room
13. Jacuzzi
14. Gymnasium
15. Shower Room
16. Landscape Garden



A rooftop swimming pool at dusk. The pool is rectangular with a curved end, filled with clear blue water. It is surrounded by a wooden deck. On the left side of the pool, there are several lounge chairs with white cushions. The pool is bordered by a low wall with glass panels. In the background, a city skyline is visible under a twilight sky. The pool area is illuminated by warm, glowing lights along the deck and under the water.

A LIFESTYLE BUILT  
ON BALANCE,  
HYDRATION AND

# *Wellness*

SWIMMING POOL





AN AMBIENCE THAT  
ELEVATES STRENGTH,  
BALANCE AND

*Vitality*

ULTRA MODERN GYM



AN ADDRESS OF  
ELITE-CLASS  
LUXURIES AND  
*Lifestyle*



JACUZZI



BASKETBALL COURT



SPA & SAUNA



WALKWAY



STEAM ROOM

Representational Image



A PLAYFUL PARADISE  
FOR YOUR LITTLE

# *Explorers*

CRÈCHE



AN ACTIVE AMBIENCE  
TO CREATE JOYFUL

# *Memories*

KIDS PLAY AREA

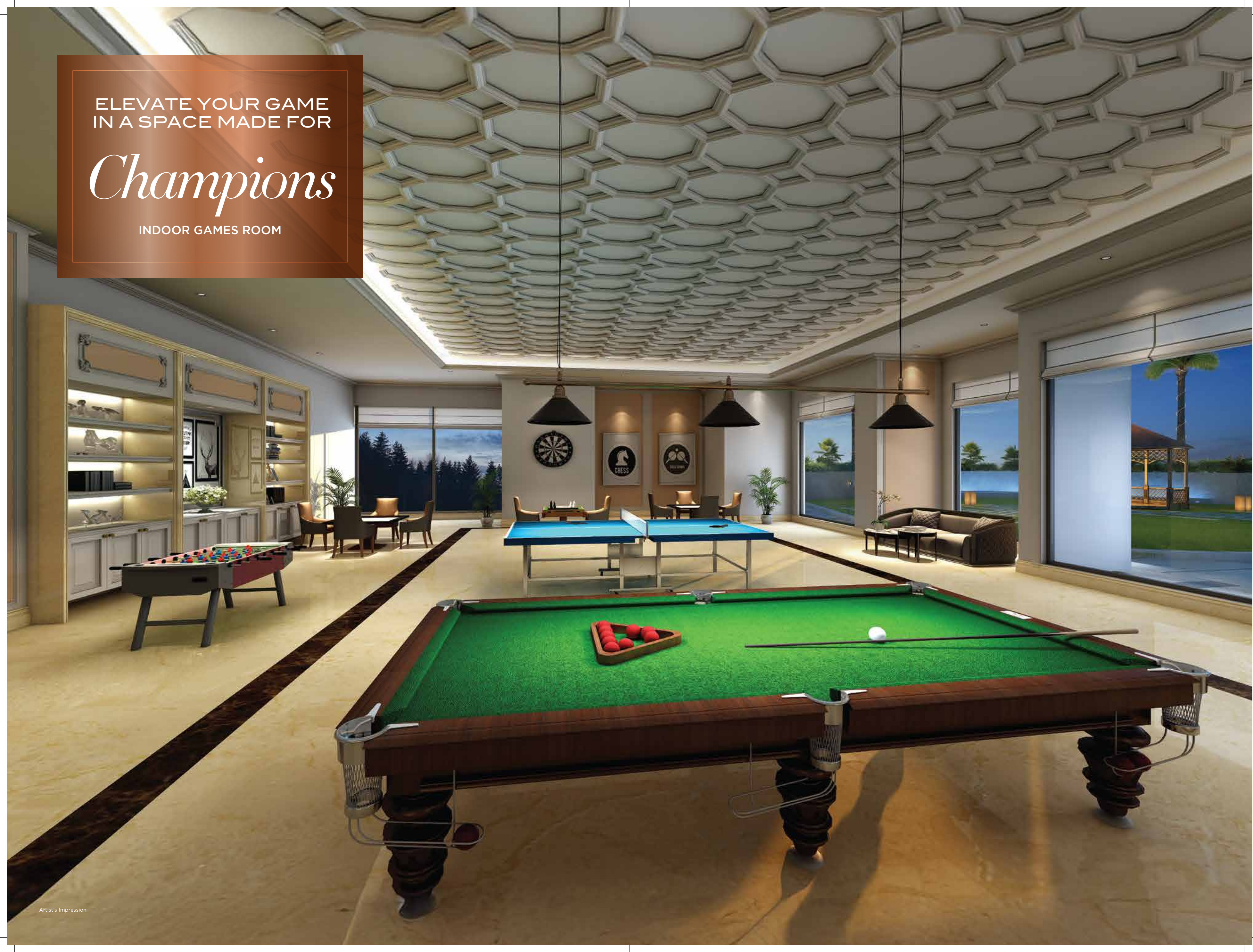




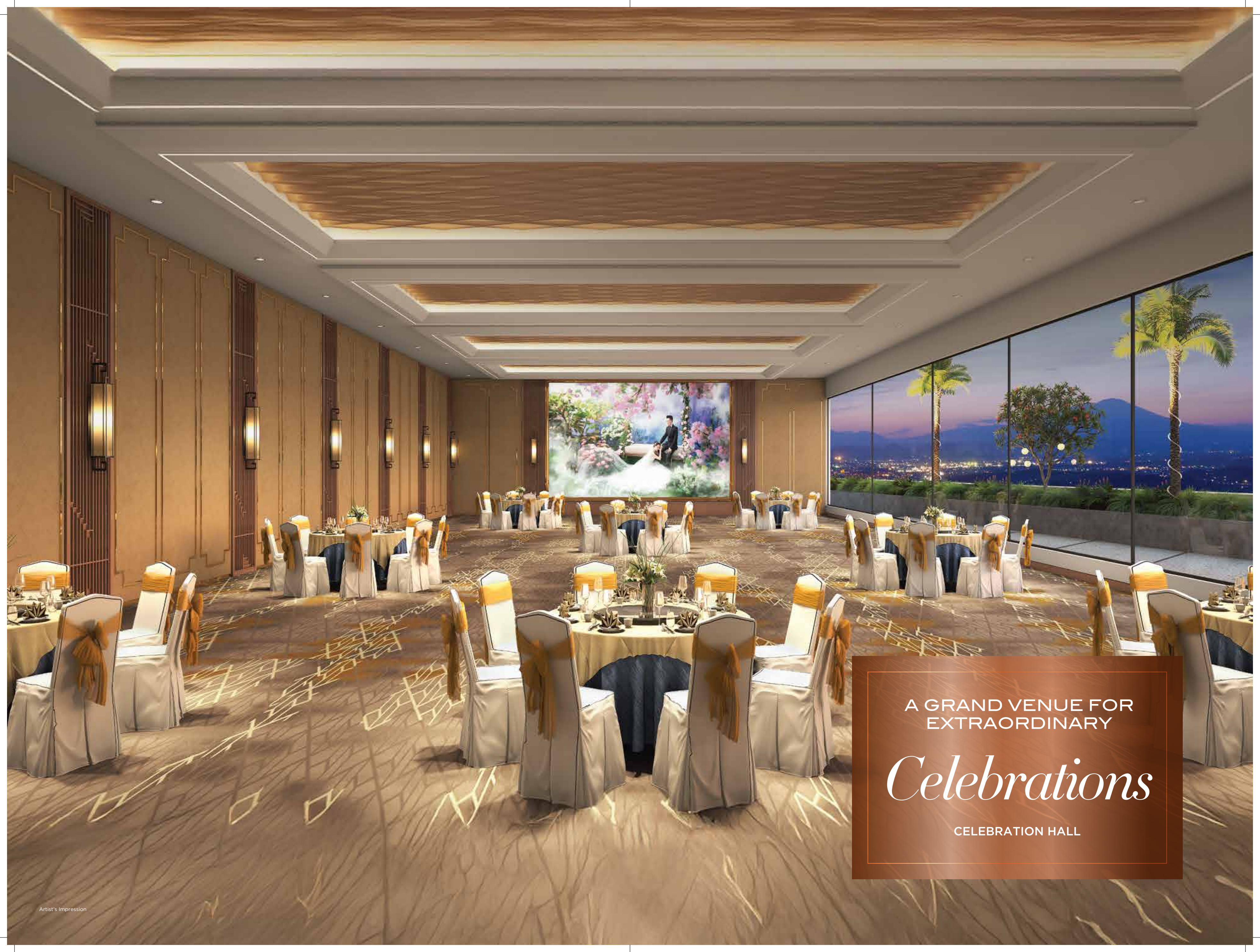
ELEVATE YOUR GAME  
IN A SPACE MADE FOR

# *Champions*

INDOOR GAMES ROOM







A GRAND VENUE FOR  
EXTRAORDINARY

# *Celebrations*

CELEBRATION HALL



TOP-NOTCH EXPERIENCES  
DESIGNED FOR YOUR ULTIMATE  
*Indulgence*



**20<sup>TH</sup> FLOOR AMENITIES**

- 1 Boxing Ring
- 2 Yoga, Meditation & Aerobic Room
- 3 Pet Park
- 4 Guest Room
- 5 Pantry
- 6 Music Room
- 7 Zumba Space
- 8 Library / Work from home Space
- 9 Café Lounge with Juice Bar
- 10 Mini Theatre
- 11 Study Room
- 12 Refuge Area

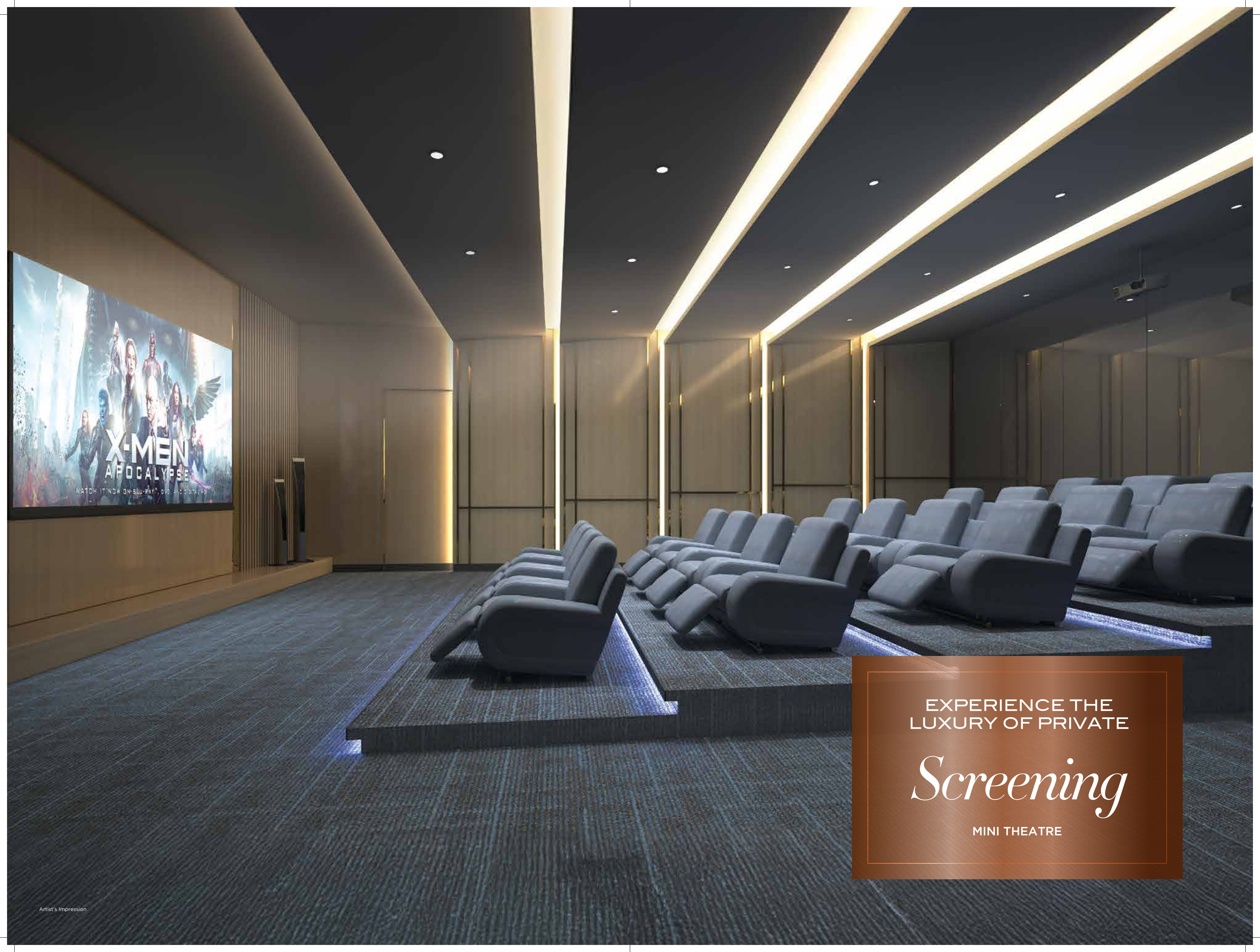


UNITE WITH THE  
PULSE OF ULTIMATE

# *Revival*

YOGA, MEDITATION & AEROBIC ROOM





EXPERIENCE THE  
LUXURY OF PRIVATE

*Screening*

MINI THEATRE



CULTIVATE CONNECTIONS  
OVER COFFEE AND

# *Conversation*

CAFÉ LOUNGE







A PLACE TO CONNECT  
AND REFRESH YOUR

*Senses*

JUICE BAR



THE IDEAL SETTING  
FOR FOCUS,  
CREATIVITY AND

*Success*

LIBRARY / WORK FROM HOME SPACE





A PASSION-PLACE  
DESIGNED TO UNLEASH  
YOUR ULTIMATE

*Power*

BOXING RING



**10<sup>TH</sup>, 14<sup>TH</sup>, 18<sup>TH</sup>, 22<sup>ND</sup>, 26<sup>TH</sup>, 30<sup>TH</sup>, 34<sup>TH</sup>, 38<sup>TH</sup> & 42<sup>ND</sup> FLOOR**





# TYPICAL FLOOR PLAN

9<sup>TH</sup>, 11<sup>TH</sup>, 13<sup>TH</sup>, 15<sup>TH</sup>, 17<sup>TH</sup>, 19<sup>TH</sup>, 21<sup>ST</sup>, 23<sup>RD</sup>, 25<sup>TH</sup>, 27<sup>TH</sup>,  
29<sup>TH</sup>, 31<sup>ST</sup>, 33<sup>RD</sup>, 35<sup>TH</sup>, 37<sup>TH</sup>, 39<sup>TH</sup>, 41<sup>ST</sup> & 43<sup>RD</sup> FLOOR



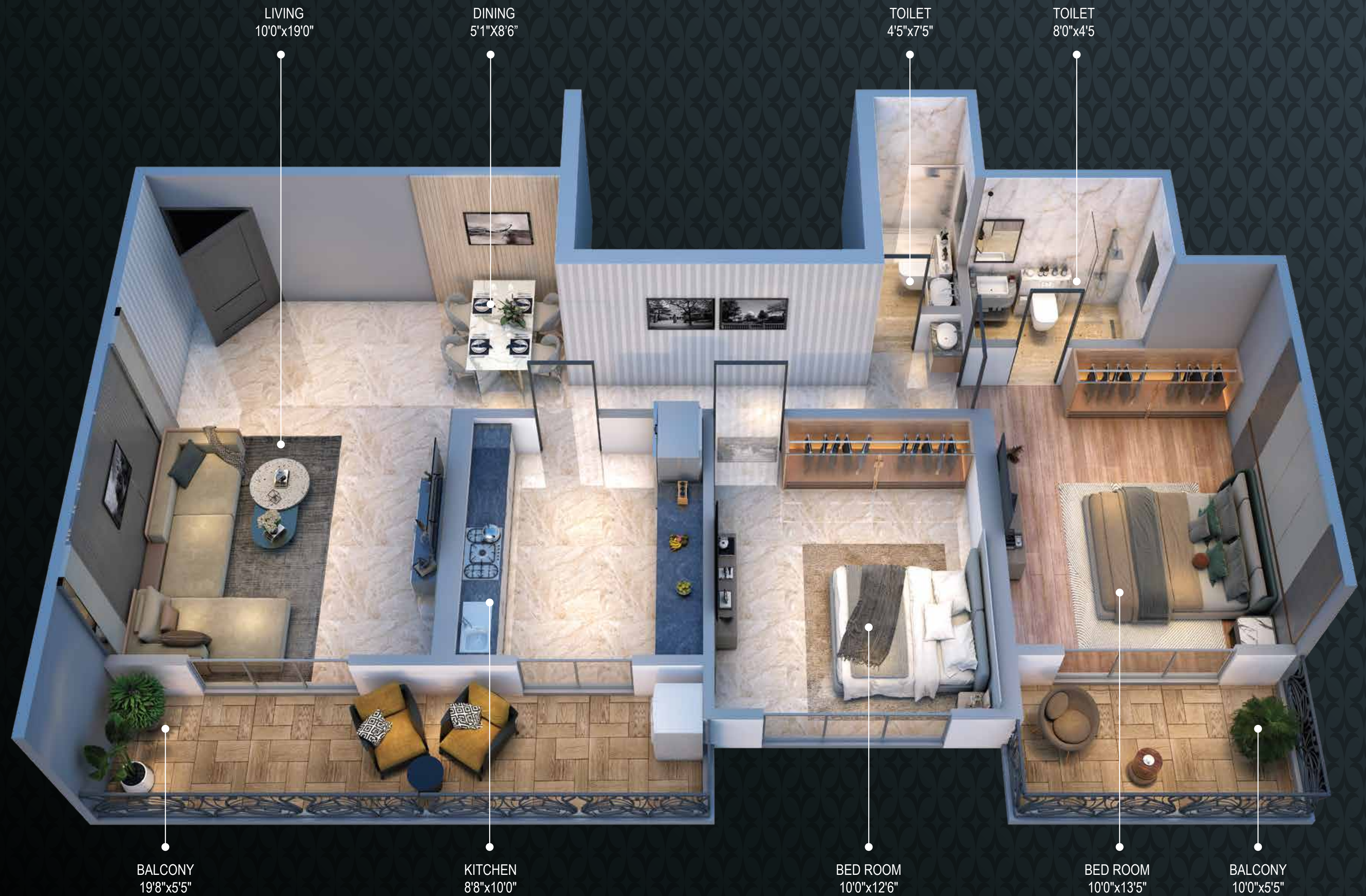


## 8<sup>TH</sup>, 12<sup>TH</sup>, 16<sup>TH</sup>, 24<sup>TH</sup>, 28<sup>TH</sup>, 32<sup>ND</sup>, 36<sup>TH</sup>, 40<sup>TH</sup> & 44<sup>TH</sup> FLOOR





## 2 BHK ISOMETRIC



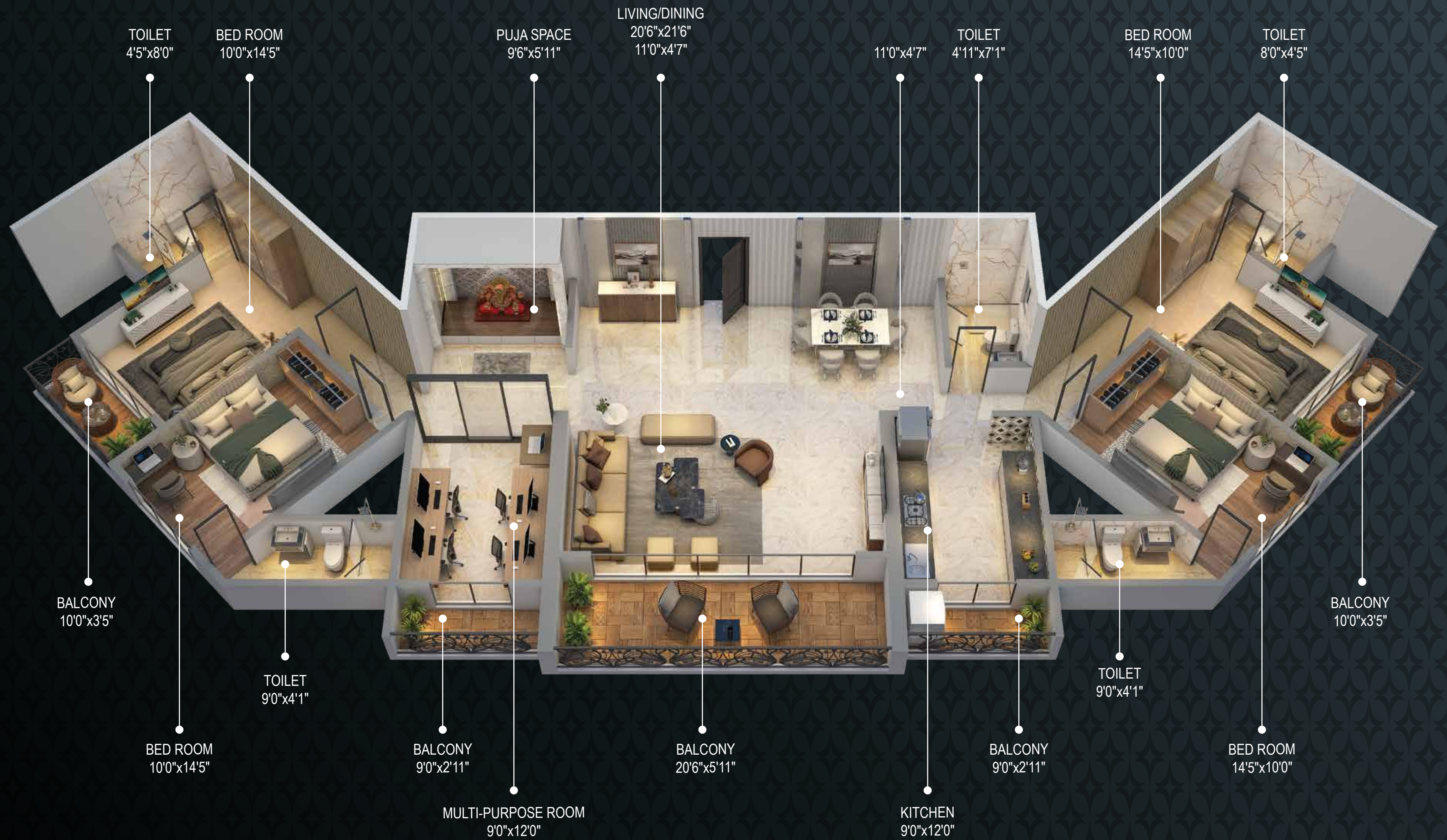


# 3 BHK ISOMETRIC





## 4 BHK ISOMETRIC







## EXPERIENCE THE #EMIRATILIFE AT DREAM ATLANTIS

### AT A GLANCE

#### PROJECT HALLMARKS

- 45-Storey High-Rise Tower
- 2, 3 & 4 BHK Residences with Sundecks Biggest Carpet Area & Sundecks in Kalyan
- Vaastu Compliant Planning
- Lifestyle Indulgences on 7th & 20th Floor
- Lavish Car Park for Each Flat
- Earthquake Resistant RCC Structure
- 7 High-speed Elevators

#### LOBBY HIGHPOINTS

- Double-height Entrance
- Reception Desk
- Guest Lounge

#### AMENITIES ON 7<sup>TH</sup> FLOOR

- Swimming Pool
- Kids Pool
- Basketball Court
- Kids Play Area
- Multi-Purpose Hall
- Banquet Hall
- Spa, Sauna, Steam & Jacuzzi
- Crèche
- Café Lounge with Juice Bar
- Gazebo / Walkway
- Indoor Games
- Gymnasium

#### AMENITIES ON 20<sup>TH</sup> FLOOR

- Boxing Ring
- Yoga, Meditation & Aerobic Room
- Pet Park
- Guest Room
- Music Room
- Zumba Space
- Library / Work from home Space
- Café Lounge with Juice Bar
- Mini Theatre
- Study Room
- Refuge Area

#### INTERNAL FEATURES

- Italian Tiles
- Jaquar Fittings
- Sound Proof Sliding Windows with Mosquito Nets
- Branded Electrical Equipment
- Wash Basins with Counter Top
- Anti-Skid Tiles in Bathroom & Balcony
- Fire-proof Flat



AN ADDRESS POISED  
FOR BUSINESS

# *Excellence*

- PREMIUM RETAIL & OFFICE SPACES





# A POWERHOUSE OF GROWTH AND *Opportunity*

- GRAND DOUBLE-HEIGHT AIR-CONDITIONED ENTRANCE LOBBY
- TWO HIGH-SPEED AUTOMATIC ELEVATORS
- 14.5 FT. FLOOR-TO-CEILING HEIGHT FOR SHOPS
- 12 FT. FLOOR-TO-CEILING HEIGHT FOR OFFICES
- 24X7 SECURITY WITH COMMON AREA SURVEILLANCE





A LANDMARK POISED TO  
DELIVER KALYAN ITS

# *Eminence*

- AN ADDRESS SURROUNDED BY THE BEST OF  
LIFESTYLE CONVENIENCES & COMFORTS





## LOCATION MAP



**AVALON TO ATLANTIS IS JUST 200 METERS AWAY**

## A LOCATION POISED FOR THE FUTURE

KALYAN IS AMONGST OLDEST PORT CITIES OF INDIA AND THE YOUNGEST HUB OF UPCOMING RESIDENTIAL DEVELOPMENT IN MUMBAI METROPOLITAN REGION. NOW, IT IS ALL SET TO WELCOME WORLD'S DISTINCT & AFFLUENT LIFESTYLE WITH DREAM ATLANTIS. IT IS POISED TO BE NUCLEUS OF GREAT CONVENIENCES AND COMFORTS.



KALYAN RLY. STN. - 2 KMS | SHAHAD RLY. STN. - 2 KMS  
KALYAN-SHIL ROAD - 4.5 KMS



SCHOOLS & COLLEGES  
IN RANGE OF 1 KM



MEDICAL STORES AT  
DISTANCE OF 400 MTR



HOSPITALS IN  
RANGE OF 1 KM



MCDONALD'S & DOMINO'S  
IN RANGE OF 1.5 KM



RETAIL MARTS IN  
RANGE OF 1.5 KM



# BUILDING LIFE STORIES REACHING A MILLION *Hearts*

## ABOUT GROUP

EVERY STRUCTURE WE BUILD, TELLS A LIFE STORY AND A HEARTFELT JOURNEY, TRANSFORMING THE DREAMS OF OUR CUSTOMERS INTO REALITY. AT DREAM DEVELOPERS, WE DON'T JUST CONSTRUCT BUILDINGS; WE CRAFT THE NEW NARRATIVES OF LUXURY THAT ECHOES THE DREAMS OF MILLIONS IN THE CITY. OUR EVERY LANDMARK IS A SAGA OF OUR UNWAVERING VISION THAT STANDS TALL ACROSS THE SKYLINES OF NAVI MUMBAI AND MMR.

IN A BRIEF SPAN, DREAM DEVELOPERS HAS EARNED THE TRUST OF PARTNERS, ASSOCIATES, AND CUSTOMERS WITH OUR DYNAMIC APPROACH TO UNPARALLELED CREATIONS. COMMITTED TO DELIVERING WORLD-CLASS LANDMARKS ON TIME, WE STAND AS A RELIABLE GROUP CRAFTING EXTRAORDINARY LIFESTYLE OF QUALITY AND INNOVATION TO LIVE, WORK AND INVEST FOR ALL.



## HALLMARKS OF EXCELLENCE

13+ YEARS OF TRUST & QUALITY

20 LAKH + SQ. FT. OF MORTGAGE-FREE DEVELOPMENTS

17+ LANDMARKS DELIVERED

8+ ONGOING RESIDENTIAL & COMMERCIAL PROJECTS

11+ UPCOMING LUXURY LANDMARKS



**DREAM DIGIT**  
Thane Belapur Road (Pawane)  
26-Storeyed Commercial Landmark



**DREAM IKON**  
(Opp. D.Y. Patil Stadium) Nerul  
30-Storeyed Commercial Landmark



**DREAM OLYMPIA**  
Bhandup (West)  
21-Storeyed Residential Landmark



**DREAM AVALON**  
Khadakpada, Kalyan (W)  
34-Storeyed Residential Landmark



**DREAM AVENUE**  
Khadakpada, Kalyan (W)  
22-Storeyed Residential Landmark



**DREAM MEADOWS**  
Upper Kharghar  
41-Storeyed Residential Landmark



**DREAM HILLS**  
Kharghar, Sector 36  
33-Storeyed Residential Landmark



