



**M. S. DEVELOPERS®**

AN ISO 9001 : 2008 & AN ISO 14001 : 2004  
CERTIFIED CONSTRUCTION COMPANY

*Corporate Office:*

*Vrindavan Valley, First Floor, opp. Vanashri Complex,  
Near Khadakapada, Kalyan (West) - 421301 Maharashtra, India  
Email- msdevelopers@yahoo.co.in*

*Site:*

*Vrindavan City, S. No. 6,7, Vadavali Road, Ambivali, Kalyan (West).*

*Architect:*

*Creations Arch & Interior Designers  
A-104-105, Everest Tower, Santoshi Mata Mandir Road, Kalyan (W).*

*R.C.C. Consultant:*

*ANA Consulting - Structural Engineers  
B-102, Jay-Vijay CHS Ltd., Laxminarayan Mandir Road,  
Ghatkopar (W), Mumbai-400086.*



**CREDAI-MCHI**



MahaRERA Registration No. :  
**P51700050781**  
URL-[www.maharera.mahaonline.gov.in](http://www.maharera.mahaonline.gov.in)

Disclaimer: The owner / developer reserves absolute right to withdraw, change, omit, delete, add, revise any terms, conditions, amenities and images used in this brochure at anytime without giving any notice.  
This brochure does not contribute any legal binding on part of developer.



*Ambivali, Kalyan (West).*

**DISTINCTIVE.  
ELEGANT.  
LUXURIOUS.**





**M. S. DEVELOPERS®**

*M. S. Developers established in 1995 is today one of the foremost real estate developer in the Mumbai Metropolitan Regional Area. With more than 2.5 million sq.ft. of completed work, it is setting higher benchmarks of excellence with it's cutting-edge creations. It's brand name is synonymous with Astute Planning, Superior Quality, Lavish Luxury, Strategic Location and Superior Value-for-Money Lifestyle Experience.*





... A LIFE WELL LIVED.  
... A LIFE WELL CONNECTED



Artist's Impression





## BEAUTIFUL ENVIRONS TO CAPTURE YOUR EMOTIONS

*Welcome to your kingdom overflowing with beauty and luxury.*

*VRINDAVAN CITY spread across 12 acres with more than 2000 flats is a paradise being developed with a truly lavish blend of nature and technology that will surpass the very definition of luxury, offering the finest in world-class living, with un-matched features and a lifestyle only a privileged few can enjoy.*

*It will be your personal paradise - a world where your mornings will echo with chirps of happiness, where the wind will soothe your mind and soul and the serene environment will relax your body.*



Artist's Impression





## THE ESSENCE OF TIMELESS STYLE & ELEGANCE

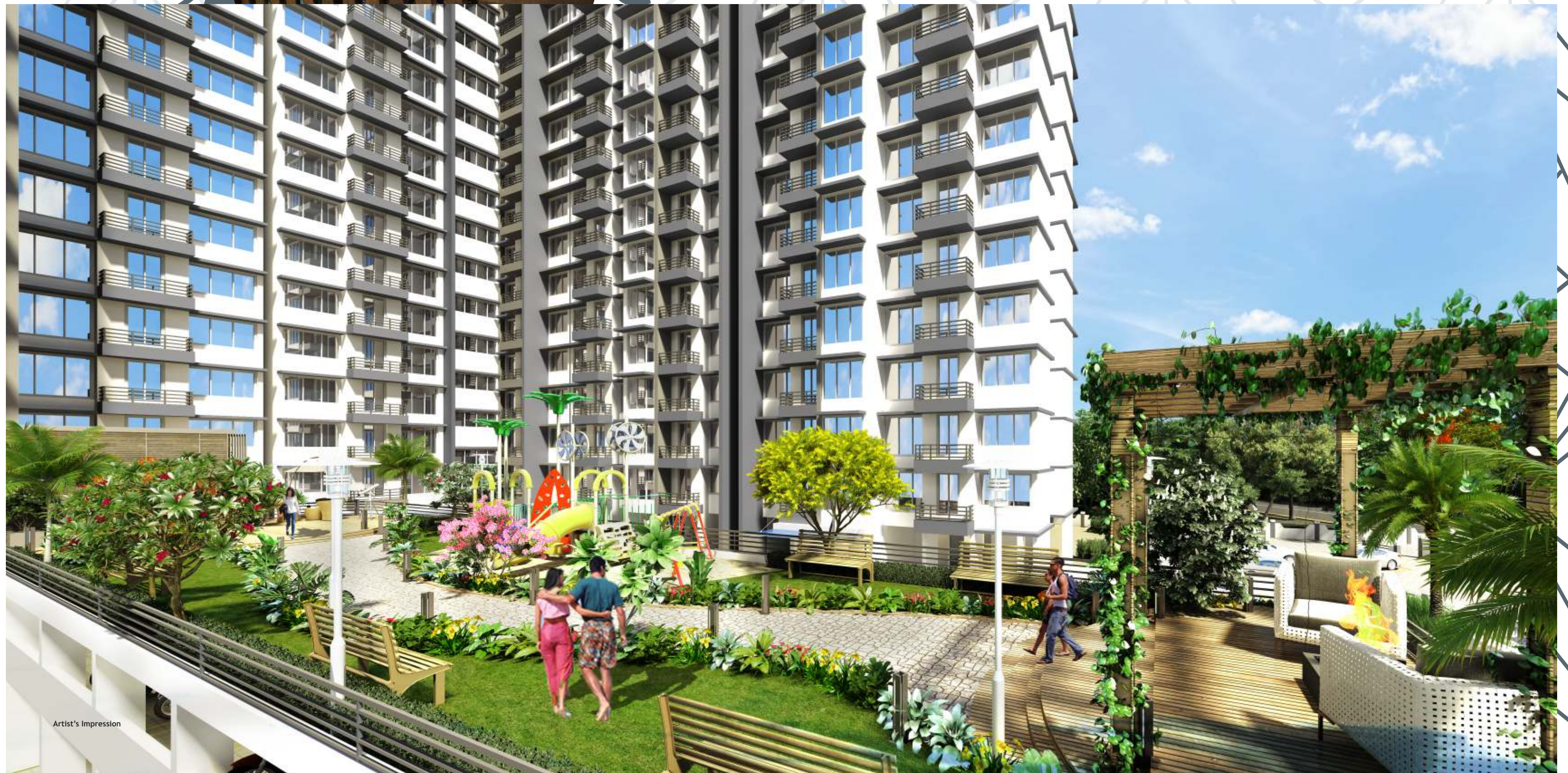






## GET SOCIAL & BUSY

*Every inch is immaculately manicured and designed to perfection with comforts, indulgences and every convenience to achieve a stunning landscape that pampers and invigorates you.*



Artist's Impression





Artist's Impression







## RELAX, INVIGORATE, REVITALIZE

*The lavish Club House has an ensemble of exclusive lifestyle amenities of indoor sports, fitness and recreation facilities. These social places encourage lounging and laughing with family and friends.*

### Entertainment:

- Club House with indoor games like Chess, Carrom, Table Tennis.
- Gymnasium and Health Club.
- Lovely Landscaped Garden and Children's Play area.

### Add-on-amenities:

- Branded high speed elevators.
- Ample car parking area.
- Designed as per Vastu Shastra Norms.
- Enhanced Structural Safety against earthquakes as per ISI Norms.
- Attractive Entrance Lobby.

### Eco Friendly Systems:

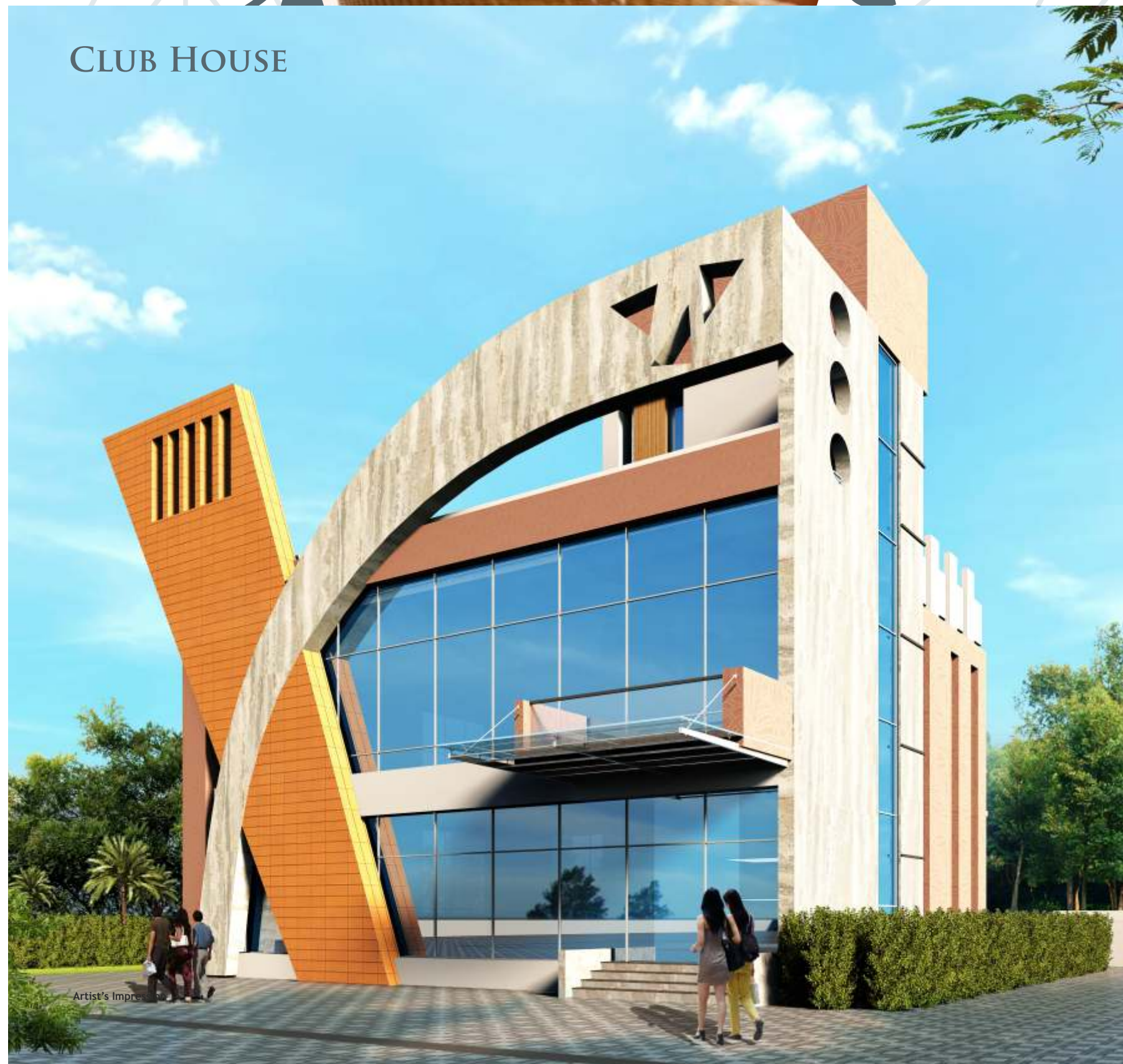
- Energy Efficient Lighting Fixtures.
- Solar Power Passage and Compound Wall.
- Eco-Friendly Garbage Disposal System.
- Rain Water Harvesting.
- Sewage Treatment Plant.

### Security & Safety:

- Power Back-Up for Lifts & Common areas.
- CCTV Intercom Facilities.

Images are for representational purpose only

## CLUB HOUSE





## STYLE & SOPHISTICATION ABOVE PAR

*Step into spacious interiors of your exquisite apartment to experience exceptional craftsmanship in every detail and class-leading comfort.*

### *Living Room:*

- *Elegant Marbonite Flooring in Living Room.*
- *Designer POP moulding on the ceiling in Living Room.*
- *Internal Washable Acrylic Painting.*
- *Large French Windows with breath taking views.*
- *Grand Entrance Door.*
- *Branded Modular Electrical Fittings.*
- *Cable, T.V. & Telephone Points in Living Room.*



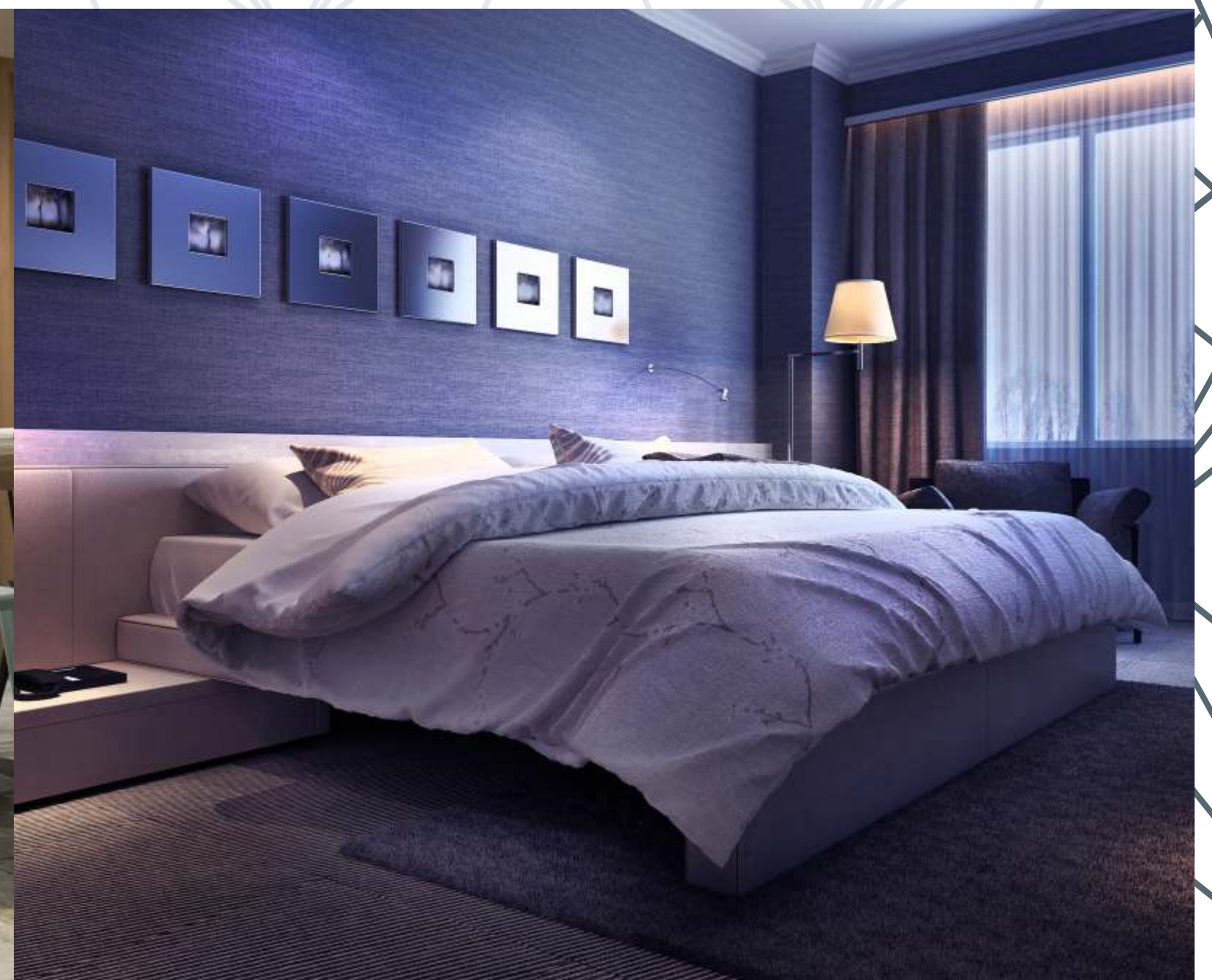
Images are for representational purpose only

## INSTANTLY COCOONS YOU WITH ITS TRANQUILITY

*Luxuriously appointed Master Bedroom is your truly relaxing, stress-free private sanctuary.*

### *Bed Room:*

- *Elegant Marbonite Flooring in Bedroom.*
- *Internal Washable Acrylic Painting.*
- *Anodized Aluminium Sliding Windows with granite sills.*
- *Fancy Door.*
- *Air-conditioned point provision in Master Bedroom and Hall.*





## TRENDY, YET HIGH ON FUNCTIONALITY

*The sleek contemporary kitchen high on functionality brings out the master chef in you and adds convenience to your lives.*

### *Kitchen:*

- Black Granite Kitchen Platform with Stainless Steel Sink and Service Platform.
- Provision for Electric & Plumbing point for Water Purifier.
- Full height Glazed Tiles in Kitchen.
- Washing Machine point provision with Inlet and Outlet.



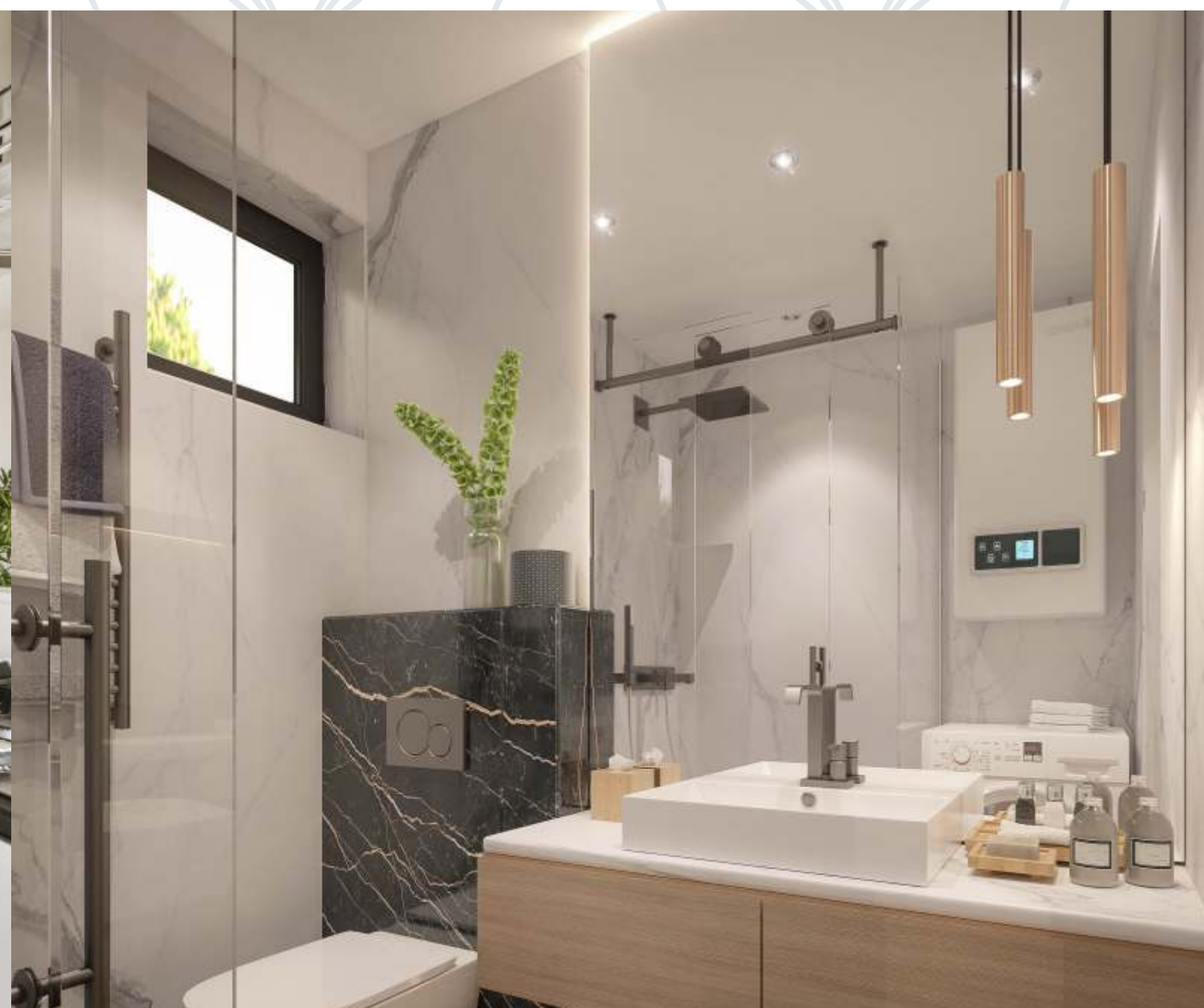
Images are for representational purpose only

## YOUR LUXURIOUS RETREAT

*The bespoke & elegant bathrooms transform an ordinary experience in to an extraordinary lifestyle experience.*

### *Bath Room:*

- Full height Glazed Tile in Toilet.
- Granite Door Frame.
- Anti-skid Flooring.
- Premium Sanitary ware and Fittings.





TYPICAL 1 BHK



TYPICAL 2 BHK



## LOCATION

- 5 minutes walking distance from Ambivali Station
- 2.5 km from Kalyan Railway Junction
- 25 kms from the proposed New Mumbai International Airport
- 1 1/2 hours from Mumbai Chatrapati Shivaji International Airport
- Easy access from National Highway
- On 30 mtrs wide road connecting Durgadi & Titwala ring road
- Near Samruddhi Express Highway (Mumbai-Nagpur Expressway)
- Ambivali railway station to be a future new railway junction for proposed Kalyan-Mumbai new railway line.

## ACCESSIBILITY

Vrindavan City - your kingdom over-flowing with beauty and luxury is strategically located with excellent connectivity and easy accessibility, both by rail and road.

It is not only located in a serene and pollution free environment but it also surrounded by a horde of lifestyle and convenience facilities like reputed schools, colleges, places of worship, hospitals & medicare facilities, malls and multiplexes.

